

ORBOT®  
**SLim**  
LITHIUM-ION HYBRID



OPERATING MANUAL

2022

CE

# WARRANTY

All ORBOT equipment has been carefully tested and inspected at our Global factory. ORBOT SliM machines are guaranteed for one year from the date of original purchase against defects or workmanship made during manufacture. Within the guarantee period we undertake at our discretion, to repair or replace any part found to be defective, free of charge to the purchaser **with subject to the following conditions:**

Claims made under the terms of the guarantee must be supported by the original invoice issued at the time of sale along with the machine serial number.

For claims under this guarantee contact the supplier from whom you've purchased the product who will arrange the appropriate action. Do not initially return the product as this could lead to transit damage.

Neither ORBOT nor its distributors will be held responsible for any incidental or consequential loss.

## **This guarantee does not cover:**

- Periodic maintenance, repair or replacement of parts due to normal wear and tear.
  - Damage caused by accident, misuse or neglect, fire or the fitting of other than genuine ORBOT parts.
  - Defects in other than genuine ORBOT parts, repairs, modifications or adjustments made by other than an ORBOT service engineer or authorized service dealer.
  - Costs and risks of transport relating directly or indirectly to the guarantee of this product.
  - Consumable items such as brushes, drivers, velcro discs, gliders, pads and so forth.
- ORBOT has a policy of continual product development and we reserve the right to alter specifications without prior notice.

### **MACHINE DATA**

Model:	_____
Serial:	_____
Date of Purchase:	_____
Dealer:	_____
Address:	_____
Phone Number:	_____
Sales Representative:	_____

# ORBOT®

**Orbot Global B.V.**

Lage Zijde 3  
5626 DL Eindhoven  
The Netherlands

+31 40 266 24 94  
hello@orbotglobal.com  
www.orbotglobal.com

<b>Warranty</b>	<b>2</b>
EC Declaration of Conformity	
<b>How to Use This Manual</b>	<b>4</b>
<b>Safety - Important Instructions</b>	<b>5 - 7</b>
<b>Technical Details</b>	<b>8</b>
<b>Operation</b>	<b>9 - 16</b>
Unpacking	<b>9</b>
Solution Tank	
Pad/Brushes	
Power Switch	
Battery	
Handle Position	<b>10</b>
Operating Machine / Operating Option	
Spray System	
Lifting and Handling	<b>11</b>
Storage	
Accessories and Applications	
Pad Driver	
SuperZorb Pad	<b>12</b>
MicroFiber Pad	
UltraLift Pad	
AkwaStrip Pad	
StoneFlash Pad	<b>13</b>
Carpet Brush	
Tile & Grout Brush	
<b>Maintenance</b>	<b>14</b>
Cleaning the Machine	
Checking the Machine	
SLiM Cleans in Small Spaces	
<b>Part Diagrams and Part Lists</b>	<b>15 - 22</b>
<b>Wiring Diagram</b>	<b>23</b>

# HOW TO USE THIS MANUAL

This manual contains the following sections:

- How to Use This Manual
- Safety
- Operations
- Maintenance
- Parts List

The HOW TO USE THIS MANUAL section will tell you how to find important information for ordering correct repair parts.

Parts may be ordered from authorized dealers. When placing an order for parts, the machine model and machine serial number are important. Refer to the MACHINE DATA box which is filled out during the installation of your machine. The MACHINE DATA box is located on the inside of the front cover of this manual.

The model and serial number of your machine is located on the left side of the handle, from the operators perspective.

The SAFETY section contains important information regarding hazardous or unsafe practices of the machine. Levels of hazards are identified that could result in product damage, personal injury, or severe injury resulting in death.

The OPERATIONS section is to familiarize the operator with the operation and function of the machine.

The MAINTENANCE section contains preventive maintenance to keep the machine and its components in good working condition. They are listed in this general order:

- Storage
- Maintenance
- Troubleshooting

The PARTS LIST section contains assembled parts illustrations and corresponding parts list. The parts lists include a number of columns of information:

- REF – column refers to the reference number on the parts illustration.
- PART NO. – column lists the part number for the part.
- PRV NO. – reference number.
- QTY – column lists the quantity of the part used in that area of the machine.
- DESCRIPTION – column is a brief description of the part.
- SERIAL NO. FROM – If this column has an (\*) and a Reference number, see the SERIAL NUMBERS page in the back of your manual. If column has two asterisk (\*\*), call manufacturer for serial number. The serial number indicates the first machine the part number is applicable to. The main illustration shows the most current design of the machine. When a boxed illustration is shown, it displays the older design.
- NOTES – column for information not noted by the other columns.

**NOTE:** If a service or option kit is installed on your machine, be sure to keep the KIT INSTRUCTIONS which came with the kit. It contains replacement parts numbers needed for ordering future parts.

**NOTE:** The manual part number is located on the lower left corner of the front cover.



## IMPORTANT SAFETY INSTRUCTIONS

When using this machine, basic precautions must always be followed, including the following:

### READ ALL INSTRUCTIONS BEFORE USING THIS MACHINE.

## WARNING

### To reduce the risk of fire, electric shock, or injury:

- Use only indoors. Do not use outdoors or expose to rain.
- Use only as described in this manual. Use only manufacturers recommended components and attachments.
- If the machine is not working properly, has been dropped, damaged, left outdoors, or dropped into water, return it to an authorized service center.
- Do not operate the machine with any openings blocked. Keep openings free of debris that may reduce airflow.
- Machine can cause a fire when operating near flammable vapors or materials. Do not operate this machine near flammable fluids, dust or vapors.
- This machine is suitable for commercial use such as: in hotels, schools, hospitals, factories, shops, and offices for more than normal housekeeping purposes.
- Maintenance and repairs must be done by qualified personnel.
- During operation, use caution around other persons, especially children.
- The machine shall only be operated by instructed and authorized persons.
- When leaving unattended, unplug the machine.
- Do not handle the plug or machine with wet hands.
- Do not unplug machine by pulling on cord. To unplug, grasp the plug and not the cord.
- Do not use with damaged cord or plug. Follow all instructions in this manual concerning grounding the machine.
- Do not pull or carry by cord, use cord as a handle, close a door on cord, or pull cord around sharp edges or corners.
- Do not pull/run machine over cord. Keep cord away from heated surfaces.
- Connect to a properly grounded outlet. See Grounding Instructions.
- If the supply cord is damaged it must be replaced by an authorized service agent.
- Unplug before cleaning or servicing.
- Operational hazard may occur when running the machine over the supply cord.
- This appliance has been designed for use with pads specified by the manufacturer. The fitting of other pads may affect its safety.
- This machine is for dry use only and shall not be used or stored outdoors in wet conditions
- Moving Parts - To reduce the risk of injury, unplug before servicing.

### READ AND SAVE THESE INSTRUCTIONS

# SAFETY

The following symbols are used throughout this guide as indicated in their descriptions:

## HAZARD INTENSITY LEVEL

There are three levels of hazard intensity identified by signal words -**WARNING**, **CAUTION**, and **FOR SAFETY**. The level of hazard intensity is determined by the following definitions:



**WARNING** - Hazards or unsafe practices CAN result in severe personal injury or death.



**CAUTION** - Hazards or unsafe practices which could result in minor personal injury or product or property damage.

**FOR SAFETY:** To Identify actions which must be followed for safe operation of equipment.

Report machine damage or faulty operation immediately. Do not use the machine if it is not in proper operating condition. The following is information that signals some potentially dangerous conditions to the operator or the equipment. Read this information carefully. Know when these conditions can exist. Locate all safety devices on the machine. Please take the necessary steps to train the machine operating personnel.

### **FOR SAFETY:**

DO NOT OPERATE MACHINE:

- Unless trained and authorized.
- Unless Operation Guide is read and understood.
- In flammable or explosive areas.
- In areas with possible falling objects.

WHEN SERVICING MACHINE:

Avoid moving parts. Do not wear loose clothing, jackets, shirts, or sleeves when working on the machine. Use only manufacturer approved replacement parts.

**THIS PRODUCT IS FOR COMMERCIAL USE ONLY**

**ELECTRICAL:**

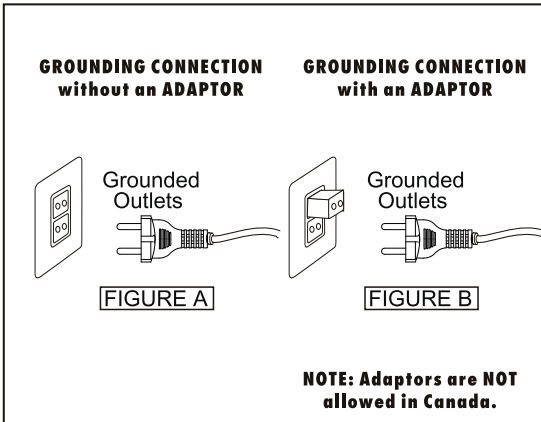
In countries over the world the machine operates under different voltage and Hertz towards the power circuit. See the voltage and Hertz data table. Using voltages below those indicated on the data label will cause serious damage to the motors.

Article number:	Name:	Voltage:	Hertz
K.1.S.120.1000.0	KIT ASSY CHARGER EU ORBOT SLIM	240V	50 HZ
K.1.S.120.1000.1	KIT ASSY CHARGER US ORBOT SLIM	120V	60 HZ
K.1.S.120.1000.11	KIT ASSY CHARGER BR ORBOT SLIM	240V	50 HZ
K.1.S.120.1000.3	KIT ASSY CHARGER UK ORBOT SLIM	240V	50 HZ
K.1.S.120.1000.4	KIT ASSY CHARGER JP ORBOT SLIM	120V	60 HZ
K.1.S.120.1000.7	KIT ASSY CHARGER KO ORBOT SLIM	120V	50 HZ
K.1.S.120.1000.8	KIT ASSY CHARGER AU ORBOT SLIM	240V	50 HZ

**GROUNDING INSTRUCTIONS:**

This appliance must be grounded. If it should malfunction or break down, grounding provides a path of least resistance for electric current to reduce the risk of electric shock. This appliance is equipped with a cord that has an equipment-grounding conductor and grounding plug. The plug must be inserted into an appropriate outlet that is properly installed and grounded in accordance with all local codes and ordinances.

For use on a nominal volt circuit with a grounded plug that looks like the plug in FIGURE A. A temporary adaptor that looks like the adaptor in FIGURE C may be used to connect this plug to a 2-pole receptacle as shown in FIGURE B, if a properly grounded outlet is not available. The temporary adaptor should be used only until a properly grounded outlet (FIGURE A) can be installed by a qualified electrician. The green colored rigid ear, lug or similar that extends from the adaptor must be connected to a permanent ground such as a properly grounded outlet box cover. Whenever the adaptor is used, it must be held in place by a metal screw.



**⚠ WARNING**

Improper connection of the equipment-grounding conductor can result in electric shock. Check with a qualified electrician or service person if you are in doubt as to whether the outlet is properly grounded. Do not modify the plug provided with the appliance - if it will not fit the outlet, have a proper outlet installed by a qualified electrician.

**SAFETY LABEL LOCATION**

If at any time the safety labels become illegible, contact your authorized representative for prompt replacement.

# TECHNICAL DETAILS

ITEM	SPECIFICATIONS
Motor	36 V/330W - DC, 3000 RPM, 59 dB with protective cover
Dual Speed	3000 RPM (Orbital), 120 RPM (Rotational)
Base Diameter	27.9 cm (11")
Wheel Diameter	10.16 cm (4")
Solution Tank Capacity	2.84 L (3/4 Gallon)
Pump	4 BAR (58 PSI)
Noise Level	59 dB
Height	119 cm (47")
Weight	12.7 Kg / 28 Lbs (+2.7kg/6 lbs w/tank & battery)
Battery (BMS)	Lithium-ion 36V/40W/6Ah (Battery Management System)
Run Time	Up to 45 Minutes (depending on floor type/pad)
Charge Time	90 Minutes



**Unpacking**

Open shipping box (both sides). Remove packaging material and roll machine out of the box.

**Solution Tank**

Disconnect the quick-connect fitting located at the bottom of the solution tank. Remove solution tank by pulling away from the handle frame. Add water or cleaning detergent of choice. Snap solution tank onto frame. Reconnect the quick-connect fitting.



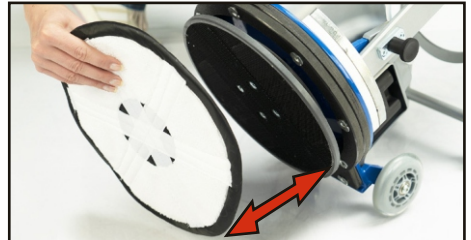
**⚠ CAUTION**

Ensure solution tank cap is securely fastened to avoid leaks and spills.

**Pads/Brushes**

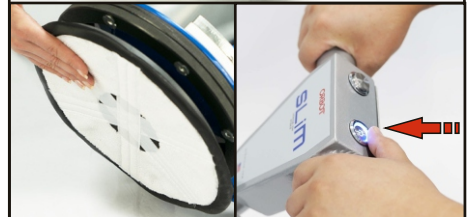
Choose an Orbot pad or brush of choice to clean or restore the desired floor.

Place under the hook pad driver BEFORE powering on machine.  
To remove, simply peel off.



**Power Switch**

Turn power switch to the OFF position located at the top of the handle. The power switch will illuminate when powered ON.



**Battery**

Insert the battery into the battery tray located inside the base housing cover.

Ensure to completely lock the battery into position until you hear a click sound.

To remove the battery, release the battery lever and pull out. You can use your right hand to help push the battery out of the tray.



**⚠ WARNING**

Always remove battery and immediately charge to avoid damage.



# OPERATION

## Handle Position

Before powering ON the machine, lower the handle into a comfortable position by pulling out the pull-pin lever located on the lower left side of the handle fork.

## Operating Machine

Turn power switch on, and begin to maneuver the machine over the floor surface.

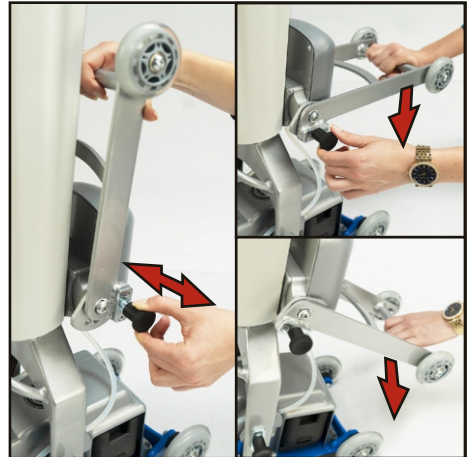
The machine can be moved in all directions.

When cleaning carpet, the machine is best moved forward to backwards, while spraying only forward.



## Operating Option

To increase operator comfort, the wheel kit can be lowered down onto the floor by releasing the pull-pin lever and choosing the desired height.



## Spray System

To apply water or detergent to the floor surface, press the spray switch located on the top right side of the handle.



## System Light Indicators

(Located on Top of Motor Cover)

### Blue lights:

- One Blue Light: Low Battery Level
- Two Blue Lights: Medium Battery Level
- Three Blue Lights: Full Battery Level

### Red light:

- Machine is working over full load capacity. Run times will lessen.

### Green light:

- Machine is working under light load capacity. Run times will increase.



## Lifting & Handling

To lift the machine into a vehicle, use handle located on fork. To lift the machine up stairs, lower the wheel kit to 90 degrees.

### CAUTION

## Storage

Always keep machine stored in the upright position. Do not store brushes under pad driver when not in use.

## ACCESSORIES AND APPLICATIONS

### WARNING

Never store the accessories in wet conditions. Keep away from extreme heat and from chemicals.

## Pad Driver

To replace the pad driver, remove the 4 screws using a #3 Phillips/Star screwdriver. Using the incorrect screwdriver can result in stripping the screw head.

Pad drivers should be replaced when the hook material becomes clogged with excess lint and debris.

### CAUTION

It is important to operate the machine using clean pad drivers to ensure optimal cleaning performance. When excess clogging occurs from lint and debris, the hook tensile strength is reduced which leads to damaged pads and brushes.

### WARNING

Never place driver onto floor surface without a pad or brush.



## OPERATION

### SuperZorb Pad

Our exclusive SuperZorb pad is made of a special cotton and polyester blend. One of the primary components that help to extract an essential amount of soil from the carpet fibers. They also play an important role to achieve fast dry times. SuperZorb pads can be used on both sides. SuperZorb pads are machine washable. Allow to air dry.

SuperZorb pads are also great to be used to power mop hard floors.

### MicroFiber Pad

Use for cleaning all carpets and hard floors. Best used for high friction floor types. Choose over SuperZorb Pads when laundry machines are limited. Can be easily washed by hand.

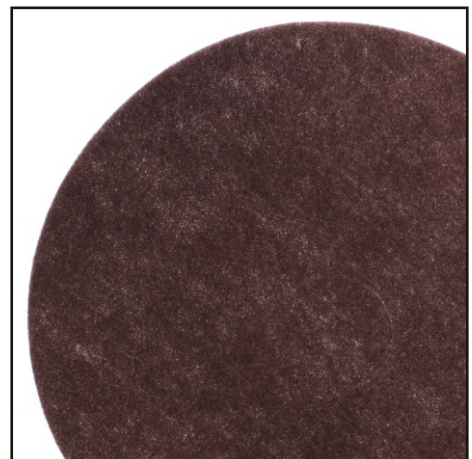
### UltraLift Pad

The UL pads are used to remove stubborn stains and grease trapped in microporous hard floors such as tile, stone, VCT/vinyl, concrete, wood, epoxy, and more.

Use with water or mild detergents.

### AkwaStrip Pad

The AkwaStrip pad is a chemical free stripping pad made of a unique material filled with diamonds. Used for deep cleaning and to remove wax off of vinyl, VCT, linoleum, wood, safety tiles and more. Used on both sides. Thoroughly rinse with clean water after use.





**StoneFlash Pads**

StoneFlash pads are part of a 5 step system for grinding, honing and polishing marble, terrazzo, travertine, limestone and more.



**Tile & Grout Brush**

Use for cleaning hard floor tiles, grout lines, pores, cracks, and crevices.

**⚠ CAUTION**

Do not store brushes under the machine. As a result, bristles will become damaged and deformed.



ARTICLE NUMBER	ARTICLE NAME
K.10.120.0747.0	KIT PAD SUPERZORB 11INCH SOIL EXTRACT ORBOT SLIM [10PCS]
K.5.120.0727.0	KIT PAD MICROFIBRE 11INCH ORBOT SLIM [5PCS]
K.5.120.0726.0	KIT PAD ULTRALIFT 11INCH ORBOT SLIM [5PCS]
K.5.120.0748.0	KIT PAD AKWASTRIP 11INCH ORBOT SLIM [5PCS]
K.5.120.0723.0	KIT PAD STONEFLASH 11INCH STEPS 1-5 ORBOT SLIM [5PCS]
120.0723.1	PAD STONEFLASH 11INCH STEP 1 ORBOT SLIM [1PC]
120.0723.2	PAD STONEFLASH 11INCH STEP 2 ORBOT SLIM [1PC]
120.0723.3	PAD STONEFLASH 11INCH STEP 3 ORBOT SLIM [1PC]
120.0723.4	PAD STONEFLASH 11INCH STEP 4 ORBOT SLIM [1PC]
120.0723.5	PAD STONEFLASH 11INCH STEP 5 ORBOT SLIM [1PC]
120.0738.0	SCRUB BRUSH TILES&GROUTS 11INCH ORBOT SLIM [1PC]
K.4.120.0743.0	KIT ENVIRON HP ENCAP CARPET CLEANER ORBOT 4.5LTR [4PCS]
K.1.120.0739.0	KIT TECHPACK ORBOT SLIM

# MAINTENANCE

## COMMON MAINTENANCE

### Cleaning the Machine

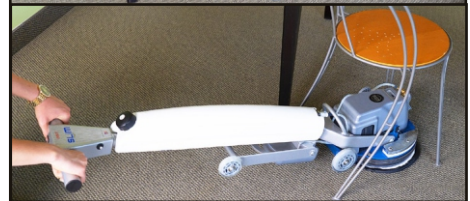
- Always maintain a clean machine to preserve it's presence and optimal performance.
- Maintain clog free hook pad drivers to maximize cleaning performance and eliminate damage to pads and brushes.

### Checking the Machine

- Check counter weight bearing to ensure optimal performance and minimal vibration.
- Check for any loose nuts and bolts to minimize vibration.
- Check pull lever pins for any loose fasteners.
- Check solution tank filters to ensure maximum solution flow.

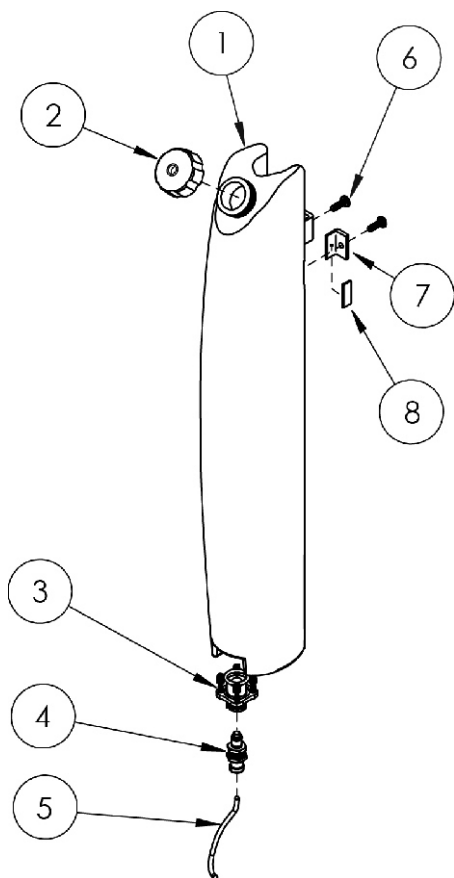
### SLiM Cleans in Small Spaces

- Ease of cleaning in tight and narrow spaces such as under chairs.
- Ease of cleaning within hard to reach spots in bathrooms.
- Ease of carrying up stairs as well as cleaning them.
- Also, planes, trains, automobiles, etc. are very hard to clean where the SLiM comes in handy to assist in these areas. Plus many more possible opportunities where most cleaning machines are too large to get to those small spaces.



## SOLUTION TANK ASSEMBLY

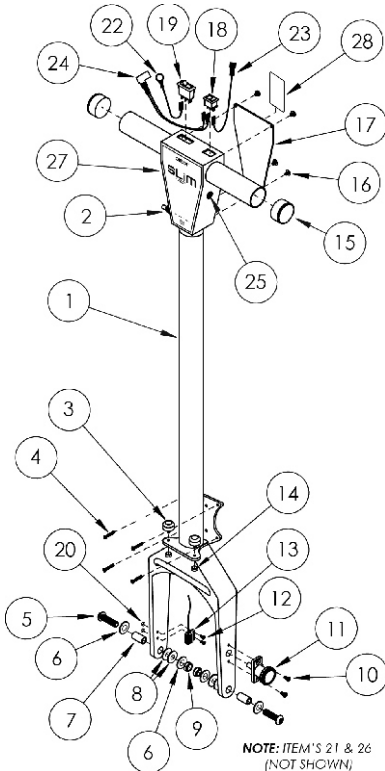
ITEM NO	PART NUMBER	PART NUMBER I-TEAM	DESCRIPTION	QTY.
1	01-221	120.0121.0	SOLUTION TANK	1
2	01-222	120.0122.0	[01-222]Tank Fill Cap	1
		120.1130.0	CHECK MINI-VALVE WITH SEAL	1
3	01-223	120.0123.0	TANK FILTER ADAPTER ASSEMBLY	1
		120.0131.0	[01-232]TANK ADAPTER O-RING DIA29mm, T=3.5mm	1
		120.0132.0	[01-233]TANK ADAPTER SCREW, #10-14 x 1/2" TORX PAN	4
		120.0133.0	[01-234]TANK ADAPTER, MESH FILTER SCREEN, SCREW, #2 x 1/4"	4
		120.0134.0	[01-230]TANK ADAPTER, MESH FILTER SCREEN	1
4	01-224	120.0124.0	MALE QUICK-CONNECT	1
5	01-225	120.0125.0A	TANK HOSE	1
6	01-226	120.0126.0	TANK TAB SCREW, 10-32 X 1/2"	2
7	01-227	120.0127.0	TANK TAB	2
8	01-228	120.0128.1	TANK TAB, FOAM ADHESIVE, 1"	2
9		120.0128.0	EVA PAD 600*25.5*1.5mm	1



# PARTS

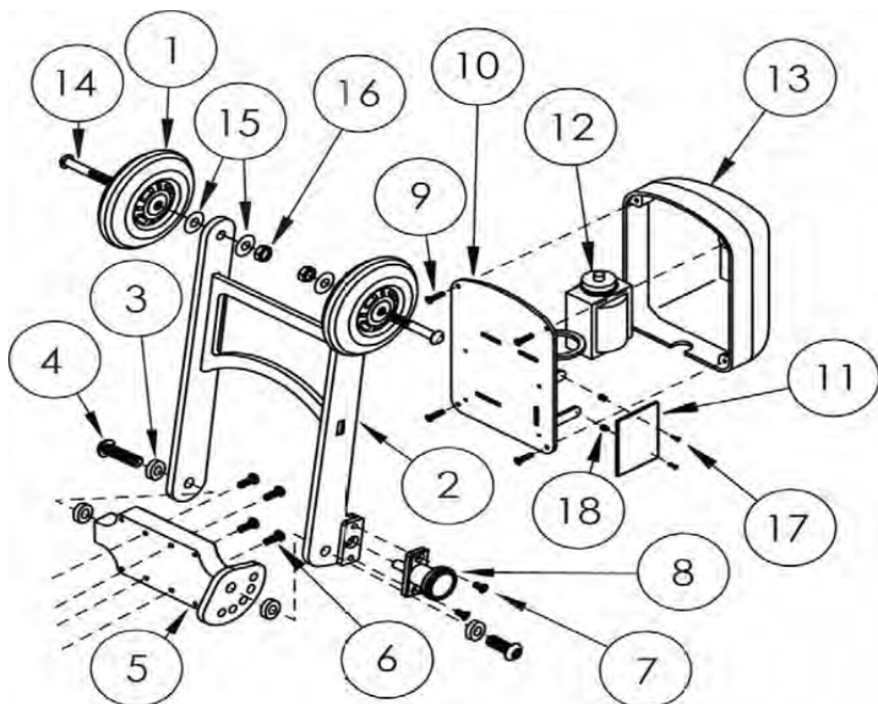
## HANDLE / FRAME ASSEMBLY

ITEM NO	PART NUMBER	PART NUMBER I-TEAM	DESCRIPTION	QTY.
1	01-201	L.120.1101.36	WELDED ALUMINUM HANDLE ASSEMBLY	1
2	01-202	120.0120.0	15 AMP CIRCUIT BREAKER	1
3	01-203	120.0102.0	RUBBER, TANK MOUNT STOP	2
4	01-204	120.0104.0	[01-204]PUMP MOUNT SCREW, 6-32 x 1-1/4"x 1/2"	4
5	01-205	120.0105.0	HANDLE FORK MOUNTING SCREW, 3/8-16 X 1-3/8"	2
6	01-206	120.0106.0	HANDLE FORK MOUNTING WASHER 3/8"	4
7	01-207	120.0107.0	HANDLE FORK SPACER	2
8	01-208	120.0108.0	HANDLE FORK INNER MOUNTING WASHER 1/2"	4
9	01-209	120.0109.0	HANDLE FORK MOUNTING NUT 3/8"	2
10	01-210	120.0110.0	PULL PIN MOUNTING SCREW 10-24 X 9/16"	2
11	01-211	120.0111.0	PULL PIN	1
12	01-212	66.0301.0	COUNTER SUNK SCREW M3*15	2
13	01-213	120.1113.0	SAFETY SWITCH	1
14	01-214	120.0114.0	RUBBER, TANK MOUNT STOP, NUT, 8-32	2
15	01-215	120.0115.0	PLASTIC CAPS, TUBE	2
16	01-216	120.0116.0	TERMINAL BOX COVER SCREW, 8-32 X 3/16"	6
17	01-217	L.120.1117.36	TERMINAL BOX COVER	1
18	01-218	S.120.0137.0	POWER SWITCH	1
19	01-219	120.0138.0	SPRAY SWITCH	1
20	01-220	20.0032.0	NUT M3 NYLON STAINLESS	2
21	01-2201	120.1120.1	COMPLETE WIRING HARNESS	1
22	01-2202	120.0120.2	GROUND WIRE, POWER SWITCH, GREEN	1
23	01-2203	120.0140.0	WIRE, POWER SWITCH to SPRAY SWITCH, BLUE	1
24	01-2204	120.0140.0	WIRE HARNESS, POWER SWITCH to BREAKER, WHITE	1
25	01-2205		PLASTIC PLUG for TERMINAL BOX	0
26	01-2206	120.0120.6	GROUND WIRE SCREW, 8-32 x 3/8" HEX, SS	4
27	01-2207	120.0120.7	LABEL, SLIM, FRONT	1
28	01-2208	120.0120.8	LABEL, QR CODE, REAR	1



## WHEEL KIT / PUMP ASSEMBLY

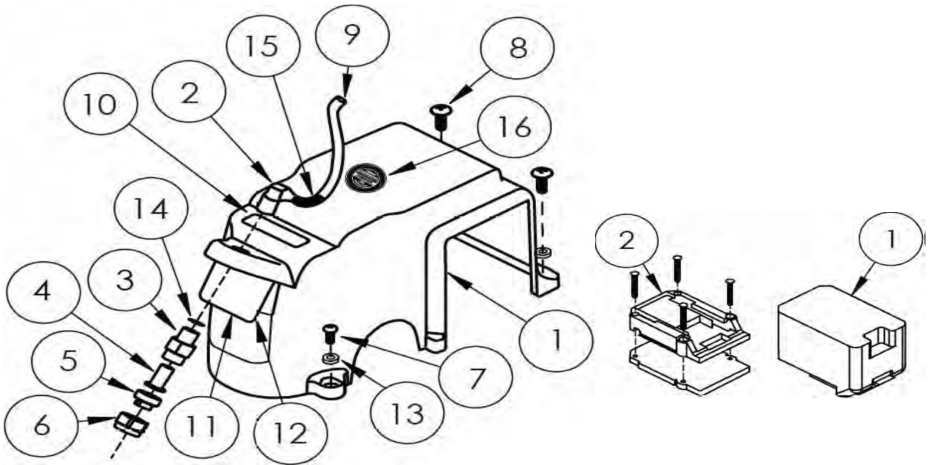
ITEM NO	PART NUMBER	PART NUMBER I-TEAM	DESCRIPTION	QTY.
1	02-221	120.0221.0	WHEEL, 3"	2
2	02-222	L.120.1222.36	WHEEL KIT FRAME ASSEMBLY	1
3	02-223	120.0223.0	WHEEL KIT WASHER, NYLON, 3/8" ID X 3/4" OD	4
4	02-224	120.0224.0	WHEEL KIT MOUNTING SCREW, 3/8"-16 X 1"	2
5	02-225	120.1250.0	SLIM STAINLESS WHEEL KIT ALIGNM	1
		120.1251.0	SLIM WHEEL MOUNT NEW2021	1
		120.0249.0	COUNTERSUNK SCREW 3/8-16.length 25.4/304/HEX SOCKET	1
6	02-226	120.0226.0	WHEEL KIT MOUNT SCREW, 10-24 X 3/4	4
7	02-227	120.0227.0	[02-227]PULL PIN MOUNTINGSCREW, 10-24 x 1/2"	2
8	02-228	120.0111.0	PULL PIN	1
9	02-229	120.0229.0	PUMP COVER SCREW, 8-32	4
10	02-230	L.120.1230.36	PUMP MOUNT	1
11	02-231	120.0231.0	PUMP CIRCUIT BOARD	1
12	02-232	120.0232.0	PUMP ASSEMBLY, 58 PSI / 4 BAR	1
13	02-233	120.0233.0	PUMP COVER	1
14	02-234	120.0234.0	WHEEL KIT SCREW, 5/16-18 x 1-3/4"	2
15	02-235	120.0235.0	UPPER WHEEL, WASHER	4
16	02-236	120.0236.0	UPPER WHEEL, NYLOCK, 5/16-18	2
17	02-237	120.0344.0	[03-244]SCREW 6-32 x 3/8"	2
18	02-238	120.0238.1	NYLON BOSH 4*7*4MM	2
		120.0245.0	EVA PAD 25.5*51*3mm	1
	02-240	120.0240.0	[02-240]PUMP ELBOW	1
	02-241	120.0241.0	[02-241]PUMP, TOP GASKET	1
	02-242	120.0242.0	[02-242]PUMP, BOTTOM GASKET	1
		S.120.0243.0	ASSY PUMP TO CIRCUIT BOARDWIRE	1



# PARTS

## SPRAY NOZZLE & MOTOR COVER ASSEMBLY

ITEM NO	PART NUMBER	PART NUMBER I-TEAM	DESCRIPTION	QTY.
1	03-201	120.0301.0	MOTOR COVER, SILVER	1
2	03-202	120.0667.0	90° QUICK-CONNECT SPRAY FITTING	1
3	03-203	120.0068.0	3016 COUPLER, FILTER	1
4	03-204	120.0304.0	CHECK VALVE STRAINER	1
5	03-205	120.0305.0	SPRAY JET TIP	1
6	03-206	120.0664.0	3017 NOZZLE RETAINER	1
7	03-207	120.0491.0	01-010 1/4"-20 SCREW 3/4L	2
8	03-208	120.0491.0	01-010 1/4"-20 SCREW 3/4L	2
9	03-209	120.0246.0A	SPRAYER HOSE	1
10	03-210	120.0310.0	LED, LENS COVER, TOP	1
11	03-101	120.0310.1	LED, LENS COVER, BOTTOM	1
12	03-102	L.120.0310.2	LED, CIRCUIT BOARD	1
13	03-103	120.0310.3	MOTOR COVER, WASHER, BLK	4
14	03-104		SPRAYER WASHER, ZINC	0
15	03-105	120.0310.5	1/4" BLACK TUBE for 90° FITTING	0
16	03-106	120.310.6	LABEL, LOW MOISTURE	1
17		120.0312.0	SILICONE WASHER 15*8*1.5MM	1



## BATTERY ASSEMBLY

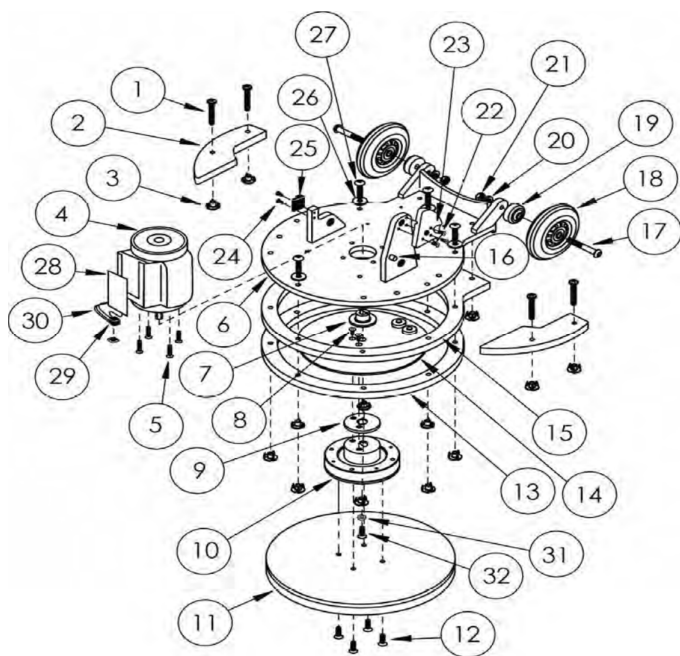
### BATTERY ASSEMBLY

ITEM NO	PART NUMBER	PART NUMBER I-TEAM	DESCRIPTION	QTY.
1	SLIM BATTERY	K1.S.120.0311.0	BATTERY, 36V, 6AH	
2	03-216	S.120.0316.0	BATTERY TRAY ASSEMBLY	1
		120.0316.0	[03-212]BATTERY FOAM BASE	1
		120.0317.0	[03-213]BATTERY TRAY	1
		120.0318.0	[03-214]BATTERY TRAY, MOUNTING SCREW, 8-32 x 1-1/2"	4
		120.0319.0	[03-215]BATTERY CONTACTS	2
		120.0317.1	BATTERY TRAY CLIP	1

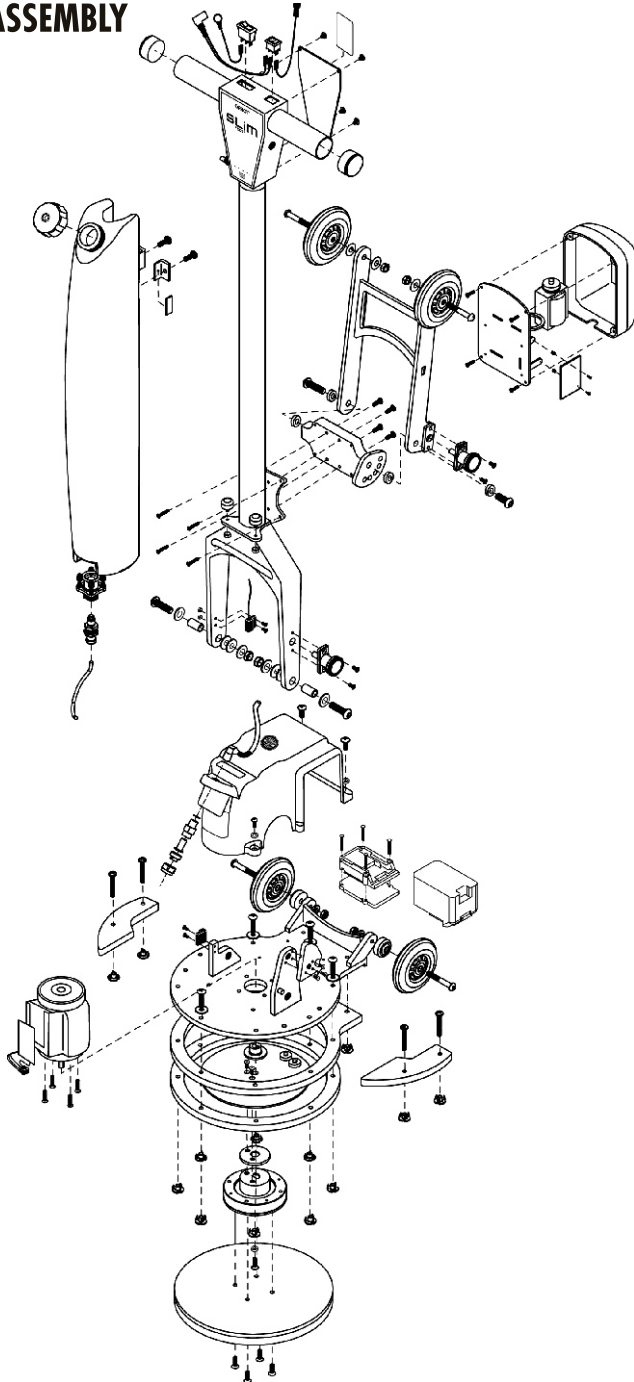


## BASE &amp; DRIVER PLATE ASSEMBLY

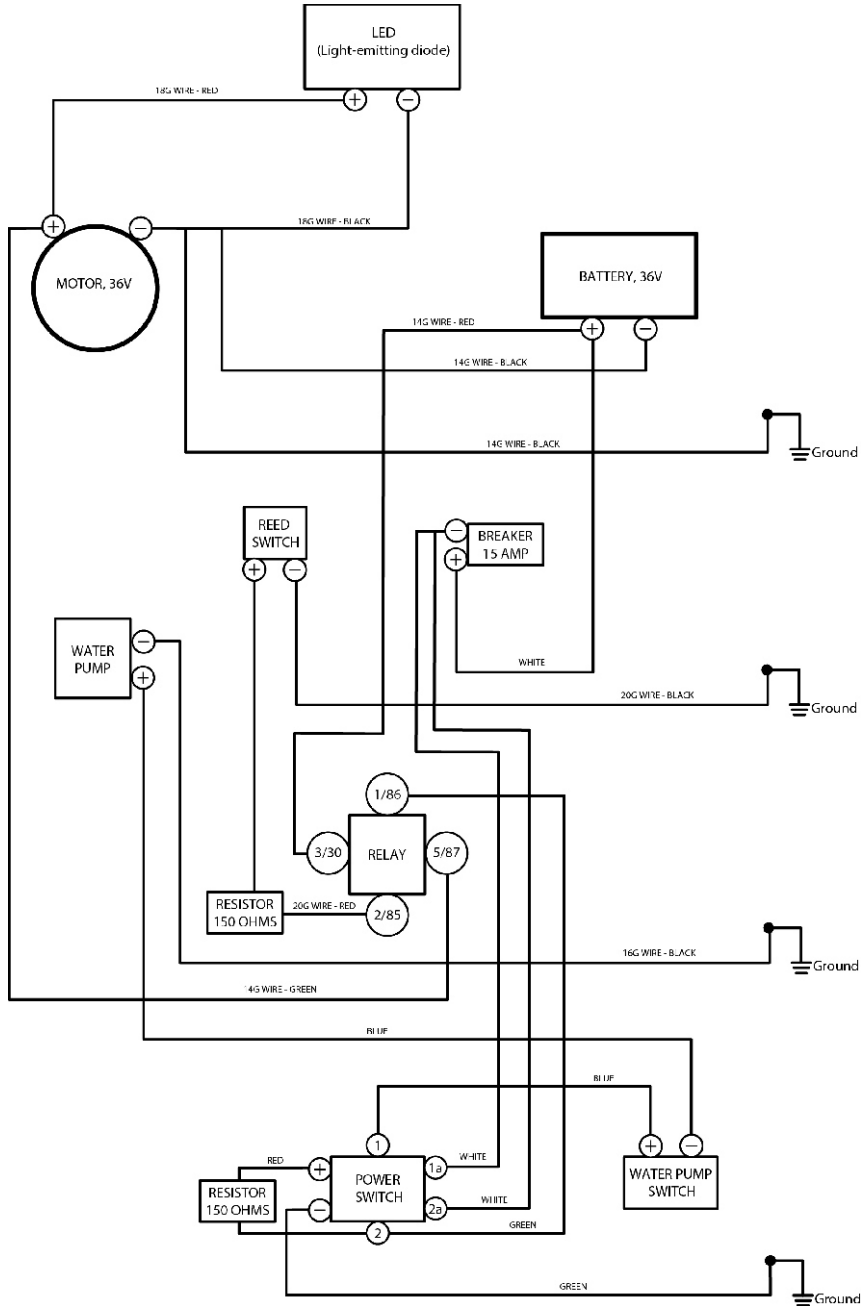
ITEM NO	PART NUMBER	PART NUMBER I-TEAM	DESCRIPTION	QTY.
1	03-221	120.0321.0	WEIGHT KIT MOUNTING SCREW, 1/4-20 X 1-3/4"	4
2	03-222	120.0322.0	WEIGHT PLATE	2
3	03-223		BUMPER THREADED INSERT	0
4	03-224	120.0324.0	[03-224]MOTOR,36V/330W,3000RPM,59DB	1
5	03-225	120.0325.0	MOTOR MOUNTING SCREW, 10-32 X 3/4"	4
6	03-226	L.120.1326.701	BASE PLATE	1
7	03-227	120.0327.0	SHAFT SUPPORT	1
8	03-228	120.0328.0	BEARING ASSEMBLY MOUNTING SCREW, 1/4-20 X 3/4"	2
9	03-229	120.0329.0	[03-229]Counterweight Bearing Washer	1
10	03-230	S.120.0330.0	BEARING ASSEMBLY	1
11	03-231	S.120.0331.0	DRIVER ASSEMBLY	1
12	03-232	120.0332.0	DRIVER MOUNTING SCREWS, 1/4-20 X 3/4"	4
13	03-233		LOWER BUMPER RING	0
14	03-234	S.120.0344.0	COUNTER WEIGHT PLATE	1
15	03-233+03-235	120.0335.1	UPPER BUMPER RING	1
16	03-236		EAR STOPPER PIN	N/A
17	03-237	120.0337.0	WHEEL MOUNTING SCREW, 5/16" X 2-1/4"	2
18	03-238	120.0338.0	WHEEL, 4	2
19	03-239	120.0339.0	WHEEL SPACER	2
20	03-240	120.0340.0	WHEEL MOUNTING WASHER, 5/16" X 5/8"	2
21	03-241	120.0341.0A	[03-241]Wheel Mounting Lock Nut, 5/16" SS	2
22	03-242	120.0342.0	PULL PIN SLIDE MOUNTING SCREW, 10-24 X 1/2"	3
23	03-243	120.0343.0	PULL PIN SLIDE	1
24	03-244	120.0344.0	REED SWITCH, MAGNET MOUNTING SCREW, 6-32 X 3/8"	2
25	03-245	120.0345.0	REED SWITCH, MAGNET	1
26	03-246	120.0346.0	BASE MOUNTING WASHER, 281 OD, .734 X 1/16	4
27	03-247	120.0347.0	BASE MOUNTING SCREW, 1/4-20 X 1-1/4"	4
28	03-248	120.0348.0	MOTOR, CIRCUIT BOARD	1
29	03-249	120.0349.0	RELAY	1
30	03-250	120.0350.0	WIRING ASSEMBLY, RELAY to CIRCUIT BOARD	1
31	03-253	120.0353.0	MOTOR SHAFT, COUNTERWEIGHT WASHER, 1/4"	1
32	03-254	120.0354.0	COUNTERWEIGHT MOUNTING SCREW, 10-32 X 9/16"	1
		120.0351.0	MUSHROOM TAPE 3M Dual lock 1"*1	2
		120.0352.0	EVA PAD 25.5*51*4.5mm	1



**COMPLETE ASSEMBLY**







## EC DECLARATION OF CONFORMITY

We: **Orbot Global BV, Lage Zijde 3, 5626 DL Eindhoven, The Netherlands**  
**hello@orbotglobal.com, www.orbotglobal.com**

---

Declare under our sole responsibility that the product:            **Scrubber**

**Floor**

---

(Type of machine)

**Orbot SLIM**

---

(Model – serial number, year of production)

to which this declaration relates is in conformity with the following standards:

**EN 60335-1, EN 60335-2-67**

---

(Title and/or number and data of issue of the standard(s) or other normative document(s))

follow the provision of directives:

Machine directive: 2006/42/EC

Electro Magnetic Compatibility Directive: 2004 / 108 / EC

In conformity with 2006/95/EC

---

Eindhoven, 01.08.2022

Frank van de Ven  
Director

---



(Place and Date of issue)

(name and signature or equivalent marking  
or authorized person)





## **Orbot Global B.V.**

Lage Zijde 3  
5626 DL Eindhoven  
The Netherlands

+31 40 266 24 94  
hello@orbotglobal.com  
www.orbotglobal.com

Distribution address  
Flight Forum Unit 3  
5657DX Eindhoven  
The Netherlands  
Loading docks 1 and 2  
Loading flat floor dock 3

Loading address  
Flight Forum Unit 2  
5657DX Eindhoven  
The Netherlands  
Loading docks 5 and 6  
Loading flat floor dock 4